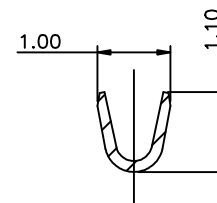
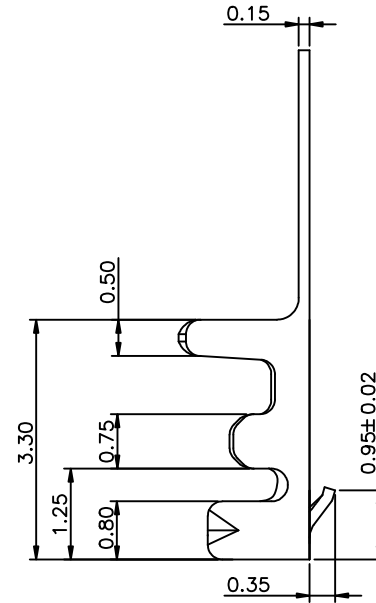


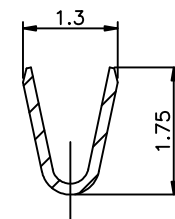
- NOTES:  
 1. MATERIAL: COPPER ALLOT T=0.15±0.01  
 2. PLATING:  
 50~100u". NICKEL PLATING OVERALL  
 1: GOLD FLASH ON CONTACT AREA  
 N: 50~100u" MATT TIN PLATING.  
 L: 80~150u" PURE TIN PLATING.  
 C: 15u" GOLD FLASH ON CONTACT AREA.

3. APPLICATION AWG 28# 32#~34#  
 4. SPEC PLS REFER TO PS-85106-T-X  
 5. PART NUMBER

85106-T-X  
 PLATING  
 N: MATT TIN  
 L: PURE TIN  
 1: GOLD FLASH  
 C: 15u" GOLD FLASH ON CONTACT AREA.



SECTION B-B



SECTION A-A

QUALITY SYMBOLS MAJOR CRITICAL	DRAWN BY	GAOLI	DATE	23/03/31		
	CHECKED BY	XUZHUYONG	DATE	23/03/31		
GENERAL TOLERANCES (UNLESS SPECIFIED) X. ±0.5 .X ±0.25 .XX ±0.15 .XXX ±0.1 ANGLES ±2°	APPROVED BY	XUZHUYONG	DATE	23/03/31	TITLE	
	UNITS	mm	SCALE	2:1	SIZE	A4
	SHEET NO.	1 OF 1	REV	E	RFO NO.	NA
					DWG NO.	85106-T-X